

**PROCUREMENT PROCEDURE OF CPRI (NON WORKS)**

Revision No. : 05  
 Dt of Revision : 27.08.2020  
 Page No. : 1 of 2  
 Section : Formats  
 Topic : Price Bid format for local supplies (Indigenous offer)

Issue No. : 02  
 Issue Dt. : 30.06.2003  
 Issued by : P A  
 Document : PPM  
 FORMAT NO.:CPRI/PUR/ePBID/IND

**Section IV L - Price Bid for local supplies**

CENTRAL POWER RESEARCH INSTITUTE, BHOPAL Web: www.cpri.in, www.tenderwizard.com/CPRI

**Tender Enquiry No : STDS/12-01/2020-21/PUR/STL/A-2017/**

**Description of the Equipment/Goods/Services : Glow wire test apparatus with test chamber.**

<b>Name and address of the Bidder *</b>				
<b>Quotation Number and Date*</b>				
<b>HSN code (Harmonized system nomenclature)*</b>				
<b>GSTIN No*</b>				
<b>SAC code (Services Accounting Code)*</b>				
<b>Income Tax permanent account number(PAN)*</b>				
<b>Details of EMD submitted*</b>				
<b>SL.No</b>	<b>Particulars</b>	<b>Qty</b>	<b>Unit Rate in Rupees</b>	<b>Total Amount in Rupees</b>
<b>1</b>	<b>Basic Price (Including mandatory spares, packing and forwarding charges) (The list of mandatory spares shall be provided in the technical bid without mentioning the price) Insurance is under Supplier's Scope</b>	<b>1</b>		<b>0.00</b>
<i>1(a)</i>	<i>GST rate as applicable in percentage only</i>			
	<i>IGST</i>			<b>0.00</b>
	<i>CGST</i>			<b>0.00</b>
	<i>SGST</i>			<b>0.00</b>
	<i>UTGST</i>			<b>0.00</b>
	<i>CESS if any</i>			<b>0.00</b>
<b>2</b>	<b>Transportation Charges (To be Quoted in Lumpsum ,if applicable)</b>			<b>0.00</b>
<i>2(a)</i>	<i>GST rate as applicable in percentage only</i>			
	<i>CGST</i>			<b>0.00</b>
	<i>IGST</i>			<b>0.00</b>
	<i>SGST</i>			<b>0.00</b>
	<i>UTGST</i>			<b>0.00</b>
	<i>CESS if any</i>			<b>0.00</b>
<b>3</b>	<b>Installation and Commissioning Charges (To be Quoted in Lumpsum ,if applicable)</b>			<b>0.00</b>
<i>3(a)</i>	<i>GST rate as applicable in percentage only</i>			
	<i>CGST</i>			<b>0.00</b>
	<i>IGST</i>			<b>0.00</b>
	<i>SGST</i>			<b>0.00</b>
	<i>UTGST</i>			<b>0.00</b>
	<i>CESS if any</i>			<b>0.00</b>
	<b>TOTAL LANDED COST</b>			<b>0.00</b>
	<b>Total Landed Cost in Words</b>			

**PROCUREMENT PROCEDURE OF CPRI (NON WORKS)**

Revision No. : 05  
 Dt of Revision : 27.08.2020  
 Page No. : 2 of 2  
 Section : Formats  
 Topic : Price Bid format for local supplies (Indigenous offer)

Issue No. : 02  
 Issue Dt. : 30.06.2003  
 Issued by : P A  
 Document : PPM  
 FORMAT NO.:CPRI/PUR/EPBID/IND

**Section IV L - Price Bid for local supplies**

CENTRAL POWER RESEARCH INSTITUTE, BENGALURU/BHOPAL Web: www.cpri.in, www.tenderwizard.com/CPRI

4	<b>OPTION-1:</b> Post warranty comprehensive AMC including, Labour, Travel, Spare Parts etc. in INR (lumpsum) (This cost is optional hence will not to be considered for cost comparison evaluations.)			
5	<b>OPTION-2 :</b> Optional accessories in INR (lumpsum) List of items with breakup price to be furnished in case CPRI demands for the same. (This cost is optional hence will not to be considered for cost comparison evaluations.)			
6	<b>Guarantee/Warranty period</b>			
7	<b>After sales and service facility (location of the facility and address to be furnished)</b>			
8	<b>Delivery period</b>			
9	<b>Validity of the offer</b>			
10	<b>Payment terms (as per CPRI payment terms)</b>			
11	<b>Details of enlistment if any under Department of expenditure , Ministry Of Finance , GOI.</b>			
12	<b>Name and address of the customer, if any to whom a similar equipment/items has been supplied with their purchase order number and date (as per the APPENDIX I).</b>			
13	<b>Whether a similar equipment could be demonstrated to our representative in case required.</b>			
15	<b>Acceptance for submission of security deposit in the event of placement of order.</b>			

PN:

- 1) The price bid shall be submitted in this format only.
- 2) All blue fields are mandatorily to be filled in.
- 3) As a policy of CPRI High Sea Sales bids are not acceptable and shall be rejected.
- 4) CPRI reserves the right to conduct "predispach inspection" prior to dispach at the works of the supplier and the expenditure towards PDI shall be borne by CPRI. However information regarding the rediness of the equipment/machinery for the PDI shall be communicated in writing at lease 70 days in advance.
- 5) UNDER TAKING: THE OFFER MADE IS IN STRICT COMPLAINCE WITH THE QUALITY AND OTHER TECHNICAL REQUIREMENT MENTIONED IN SECTION - IV T.

**PROCUREMENT PROCEDURE OF CPRI (NON WORKS)**

Revision No. : 05  
 Dt of Revision : 27.08.2020  
 Page No. : 1 of 2  
 Section : Formats  
 Topic : Price bid format for Non - Local supplies  
 (Import) offers

Issue No : 2  
 Issue Dt. : 30.06.2003  
 Issued by : Q A  
 Documents : PPM  
 FORMAT NO.:CPRI/PUR/ePBID/IMP

**Section IV NL - Price Bid format for Non - Local supplies (Import) Offer**

CENTRAL POWER RESEARCH INSTITUTE, BHOPAL Web: www.cpri.in, www.tenderwizard.com/CPRI

Tender Enquiry No :STDS/12-01/2020-21/PUR/STL/A-2017/

Description of the Equipment/Goods/Services : Glow wire test apparatus with test chamber.

<u>Name and address of the Bidder</u>	
<u>Quotation Number and Date</u>	
<i>HSN code (Harmonized system nomenclature)</i>	
<i>GSTIN No (if applicable)</i>	
<i>SAC code (Services Accounting Code)</i>	
<i>Income Tax permanent account number(PAN)</i>	
<i>Details of EMD submitted</i>	

Sl.no	Particulars	Qty	Unit Rate in Figures	Currency Type	Amount
1	FOB value of the complete system (Including mandatory spares, packing and forwarding charges) (The list of mandatory spares shall be provided in the technical bid without mentioning the price)	1			0.00
2	Insurance charges upto CPRI(ware house to ware house basis in Lumpsum)				0.00
3	Freight Charges,As applicable(Lumpsum)				
	3a) Air Freight Charges.(Lumpsum)				0.00
	3b) Sea Freight Charges.(Lumpsum)				0.00
4	Total CIP/CIF cost				0.00
	Total CIP/CIF cost in words				
5	Installation and commission charges in INR (Lumpsum)				0.00
5(a)	<i>GST as applicable (GST rate in percentage only)</i>				
	<i>IGST</i>				0.00
	<i>CGST</i>				0.00
	<i>SGST</i>				0.00
	<i>UTGST</i>				0.00
	<i>CESS if any</i>				0.00
	<b>TOTAL COST</b>				<b>0.00</b>
	<b>Total Cost in Words</b>				

**PROCUREMENT PROCEDURE OF CPRI (NON WORKS)**

Revision No. : 05  
 Dt of Revision : 27.08.2020  
 Page No. : 2 of 2  
 Section : Formats  
 Topic : Price bid format for Non - Local supplies  
 (Import) offers

Issue No : 2  
 Issue Dt. : 30.06.2003  
 Issued by : Q A  
 Documents : PPM  
 FORMAT NO.:CPRI/PUR/ePBID/IMP

**Section IV NL - Price Bid format for Non - Local supplies (Import) Offer**

CENTRAL POWER RESEARCH INSTITUTE, BENGALURU/BHOPAL Web: www.cpri.in, www.tenderwizard.com/CPRI

Sl.no	Particulars	Qty	Unit Rate in Figures	Currency Type	Amount
6	<b>OPTION-1 :</b> Post warrenty comprehensive AMC including, Labour, Travel, Spare Parts etc. in INR (lumpsum) (This cost is optional hence will not to be considered for cost comparission evaluations.)				
7	<b>OPTION-2 :</b> Optional accessories in INR (lumpsum) List of items with breakup price to be furnished in case CPRI demands for the same. (This cost is optional hence will not to be considered for cost comparission evaluations.)				
2	<b>Guarantee/Warrantee period</b>				
3	<b>After sales and service facility (location of the facility and address to be furnished)</b>				
4	<b>Delivery period</b>				
5	<b>Validity of the offer</b>				
6	<b>Payment terms (as per CPRI payment terms)</b>				
9	<b>Name and address of the customer, if any to whome a similar equipment/items has been supplied with their purchase order number and date (as per the APPENDIX I).</b>				
10	<b>Whether a similar equipment be demonstrated to our representative in case required.</b>				
12	<b>Acceptance for submission of security deposit in the event of placement of order.</b>				

NOTE : CPRI IS EXEMPTED FROM PAYMENT OF CUSTOMS DUTY UNDER NOTIFICATION NO.51/96 DATED 23-071996 AND AMENDED NOTIFICATION NO.24/2007-CUSTOMS DATED 1-3-2007(HOWEVER CONCESSIONAL CUSTOMS DUTY AND ADDITIONAL CUSTOMS DUTY AS APPLICABLE WIIL BE CONSIDERED.

UNDER TAKING: THE OFFER MADE IS IN STRICT COMPLAINCE WITH THE QUALITY AND OTHER TECHNICAL REQUIREMENT MENTIONED IN SECTION IV T























**PROCUREMENT PROCEDURE OF CPRI (NON WORKS)**

Revisio : 04  
 Dt of R : 27.08.2020  
 Page N : 1 of -----  
 Section : Formats  
 Topic : Technical Specifications format

Issue No : 2  
 Issue Dt. : 30.06.2003  
 Issued by : P A  
 Documents : PPM

FORMAT NO.:CPRI/PUR/eTBID/GTP

**Section IV T -Technical Specification**

**CENTRAL POWER RESEARCH INSTITUTE, BHOPAL Web: www.cpri.in, www.tenderwizard.com/CPRI**

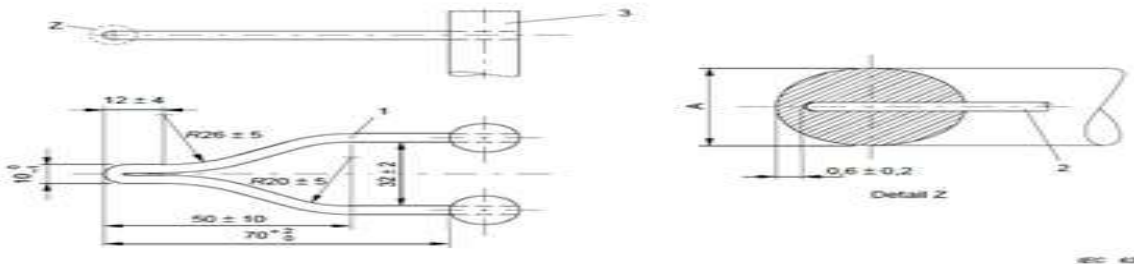
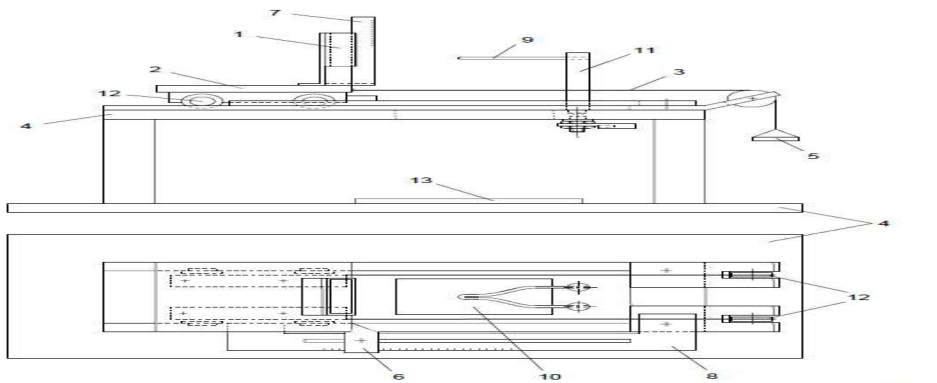
Tender Enquiry No : STDS/12-01/2020-21/PUR/STL/A-2017/

Description of the Equipment/Goods/Services : Glow wire test apparatus with test chamber.

Note : 1) The technical bid submitted in other than this format is liable to be rejected.

2) All blue fields are mandatorily to be filled in.

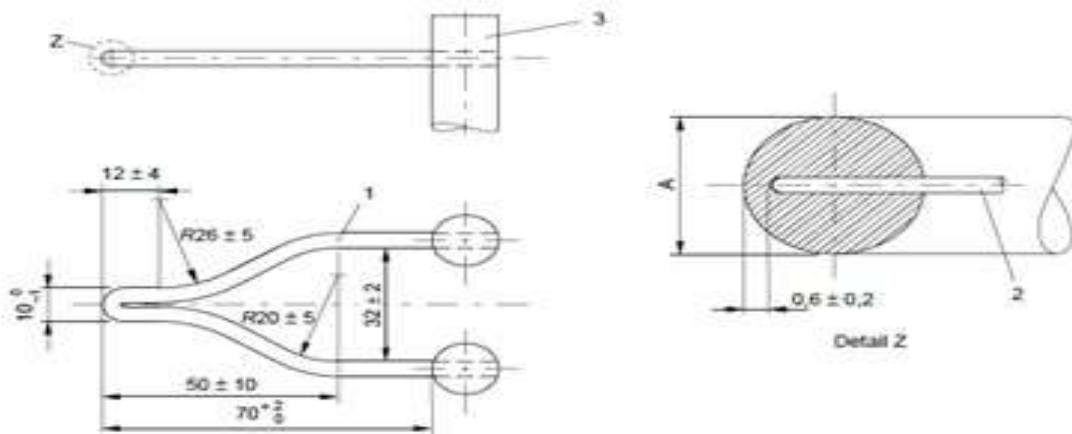
Name of the Vendor				
Quotation Number and Date				
Sl.No.	Parameters	CPRI Specification / Requirements	Qty	To be completed by the Bidder
				Guaranteed Technical Particulars (GTP)
				Specify deviations/Remarks if any
1	<b>Quantity</b>	<b>One</b>		
2	<b>Place where equipment /service to be supplied /provided</b>	CPRI,STDS,Supplementary Test Laboratory,Bhopal		
3	<b>Scope</b>	Glow wire test apparatus with test chamber for conducting resistance to abnormal heat and fire as per the standard/specifications IEC 60695-2-10(latest) and product standard IS/IEC 60898-1(latest),IS 12640(latest),IS/IEC 60947-1(latest) etc		
4	<b>Objective</b>	The test is generally conducted to check the resistance of material incase of fire hazards used for domestic and industrial applications.		
4	<b>General conditions required for all the items</b>	Mains supply : 230Vac ± 10% (Single phase) Frequency : 50Hz ± 5% Power rating : According to the individual component comprising the system SERVICE CONDITIONS : MSL : 523mm Ambient temperature : upto 45°C Humidity : 5-90%RH Type of installation : Indoor		
5	<b>Features</b>	1. A motorized sliding carrier with an universally adjustable SS perforated tray for mounting of the specimen. 2) Self-adjusting constant current mode operation as soon as heater-specimen contact is established(ammeter shall be provided for displaying the current). 3) Motor shall be capable to bring back the fixture to the pre-test position automatically after the completion of tip application. 4) Nickel/Chromium based heating element(glow wire) 5) Cr/Al based fine wire based thermocouple for temperature sensing. 6) Temperature range 0-980° C. 7) Time controller : micro-controller based programmable timer 0 to 99.9seconds. 8) Precision scale shall be provided to measure the height of the flame. 9) Emergency switch,fuses and mcb shall be provided for safety. 10) The apnel shall be made of aluminium material.		

6	<b>Technical Specifications</b>	<p>1) The glow -wire shall be formed from nickel/chromium(&gt;77%Ni/20±1% Cr) wire diameter 4.00mm±0.07mm(before bending).The dimension of the glow-wire loop shall be as shown in the figure below.</p>  <p>Glow-wire material: Nickel/Chromium (&gt;77 %Ni/20 ± 1 %Cr) Diameter: 4,0 mm ± 0,07 mm (before bending)</p> <p>The test apparatus shall be designed in such a way that the glow wire is kept in a horizontal plane and applies a force of 0.95N±0.10N to the specimen during the application of glow wire. The temperature of the tip of the glow-wire shall be measured by a class 1 mineral-insulated metal-sheathed fine-wire thermocouple with an insulated junction. It shall have an overall nominal diameter of 1.0mm. The thermocouple shall be suitable for continuous operation at temperature upto 960°C(Type K). The welded point shall be located inside the sheath as close to the tip as practicable. The sheath shall consist of a metal resistant to continuous operation at a temperature of atleast 1050°C. The glow-wire,with the thermocouple inserted as shown in the above figure detail Z</p>			
		<p>2) The test apparatus shall be so designed that the burning or glowing particles falling from the test specimen are able to fall without obstruction. The apparatus shall be as shown in the figure below :</p>  <p>a) Test apparatus- static glow-wire, moving test specimen (example)</p>			
7	<b>Manuals</b>	<p>Two sets in English to be supplied in Hard copy - Operation and maintenance with troubleshooting - Drawings - Copy of software -Electrical/ instrumentation -Technical/ service manual</p>			
8	<b>Calibration</b>	<p>The instrument shall be supplied along with calibration certificate from a laboratory accredited as per ISO / IEC 17025</p>			
9	<b>Warranty</b>	<p>The performance guarantee of the instrument shall be one year from the date of commissioning. 10% bank guarantee during warranty period is required.</p>			
10	<b>Training</b>	<p>Training on the equipment use shall be provided to the CPRI officers at CPRI</p>			
11	<b>Delivery period :</b>	<p>The instrument is to be commissioned within 3months from the date of purchase order at CPRI,STDS,Bhopal.</p>			
12	<b>Other terms &amp; conditions :</b>	<p>All other terms and conditions shall comply with CPRI's purchase procedure. The circuit diagram, operation manuals, maintenance instructions of the test system/equipment/instrument shall be submitted in duplicate to CPRI alongwith the set-up.</p>			

PN: 1) Mere statement of "Complied" do not suffice the requirement. The details of technical parameters in proof of CPRI requirements shall be furnished along with technical write-up, catalogues, brochures, literatures, phamplates, or any other documents shall be submitted in hard copy along with technical bid.  
2) Calibration reports/certificates, factory test reports/certificates from an accredited agencies/facilites shall be submitted wherever applicable.  
3) CPRI reserves the right to conduct "predispach inspection" prior to dispach at the works of the supplier and the expenditure towards PDI shall be borne by CPRI. However information regarding the rediness of the equipment/machinery for the PDI shall be communicated in writing at lease 70 days in advance.  
Address : Joint Director (Purchase), Purchase Authority,  
Central Power Research Institute, Govindpura, Bhopal-462023  
Telefax: 0755-2586283, email:khairwar@cpri.in , web : www.cpri.in



1) The glow -wire shall be formed from nickel/chromium(>77%Ni/20±1% Cr) wire diameter 4.00mm±0.07mm(before bending).The dimension of the glow-wire loop shall be as shown in the figure



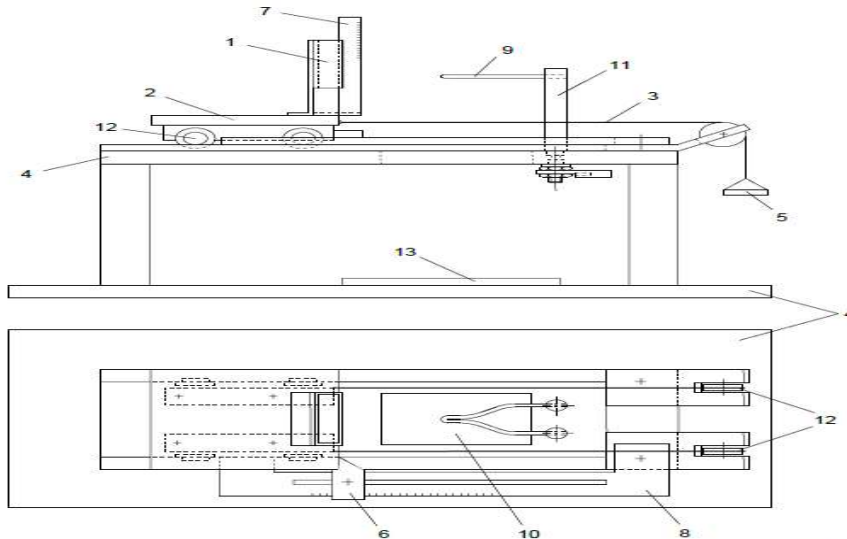
IEC 63212

Dimensions in millimetres

Glow-wire material: Nickel/Chromium (>77 %Ni/20 ± 1 %Cr)

Diameter: 4,0 mm ± 0,07 mm (before bending)

2) The test apparatus shall be so designed that the burning or glowing particles falling from the test specimen are able to fall without obstruction. The apparatus shall be as shown in the figure below :



IEC 634/13

**Key**

- |  |  |
|--|--|
| 1 Test specimen support (see Figure 4) | 8 Penetration adjustment                       |
| 2 Carriage                             | 9 Glow-wire                                    |
| 3 Tensioning cord                      | 10 Cut-out in base plate for falling particles |
| 4 Base plate                           | 11 Glow-wire mounting stud                     |
| 5 Weight                               | 12 Low-friction rollers                        |
| 6 Adjustable stop                      | 13 Specified layer                             |
| 7 Scale to measure height of flame     |  |

a) Test apparatus– static glow-wire, moving test specimen (example)