



**20<sup>th</sup> January 2023, Friday  
10:00 AM to 1:00 PM (IST)**

## WEBINAR ON TESTING OF HIGH VOLTAGE ELECTRICAL EQUIPMENTS



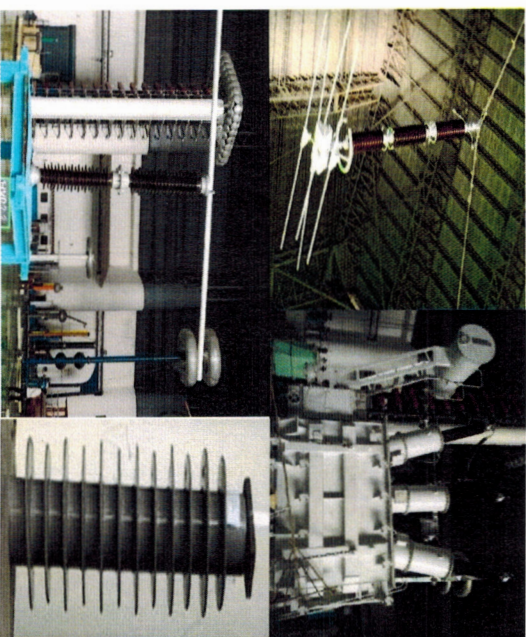
**Organized by**  
**High Voltage Division**  
**Central Power Research Institute**  
**Bengaluru**  
Website: [www.cpri.res.in](http://www.cpri.res.in)

### Content

- Dielectric testing of Transformer
- Dielectric testing of Insulators
- RIV testing of Insulators & Hardware's
- Virtual Demonstration of HV LAB & facilities

#### Co-ordinators

**Mr. R.K. Gajendra, Engineering Officer**  
([gajendra@cpri.in](mailto:gajendra@cpri.in), Mob:94485 19686)  
**Mr. Dharmesh Y, Engineering Officer**  
([dharmesh@cpri.in](mailto:dharmesh@cpri.in), Mob: 63620 37114)  
**Mrs. S. Priya, Engineering Officer**  
([priya@cpri.in](mailto:priya@cpri.in), Mob:94492 11452)  
**Mr. K. Marimuthu, Engineering Officer**  
([marimuthuk@cpri.in](mailto:marimuthuk@cpri.in), Mob:88926 30540)  
**Mr. Suresh, Engineering Officer**  
([suresh@cpri.in](mailto:suresh@cpri.in), Mob:94494 92735)  
**Mr. G Pandian, Joint Director & HOD**  
([gpandian@cpri.in](mailto:gpandian@cpri.in), Mob:97418 36174)



Registration Fee			
Sl. No.	Institutions	Fee per person	
1	State power utilities /Govt. agencies up to 5 participants	Rs. 750	
	Group discount for nomination of:		
	a) 6 participants up to 10 participants.	Rs. 650	
2	b) 11 participants up to 30 participants.	Rs. 600	
	Private sector up to 5 participants	Rs. 1000	
	Group discount for nomination of:		
3	a) 6 participants up to 10 participants.	Rs. 750	
	b) 11 participants up to 30 participants.	Rs. 600	
	Educational Institutions		
4	a) Students of educational institutions	Rs. 500	
	b) Faculty members of educational institutions	Rs. 500	
	c) Lump sum amount if the participation is up to 50 people per batch	Rs. 7500	
5	Charges for foreign delegates	Rs. 1500	
GST 18 % extra applicable (At present)			

**Account Details for Online Payment:**  
Please enter "HVEE23" in remarks while doing transaction, which is mandatory

Account No.	10356553310
Acc. Name	CPRI
Bank Name	State Bank of India, IISc. Branch.
IFSC Code	SBIN0002215

[Click to register for webinar](https://forms.gle/EX6DfFuPJ3WXXtCw8)

<https://forms.gle/EX6DfFuPJ3WXXtCw8>